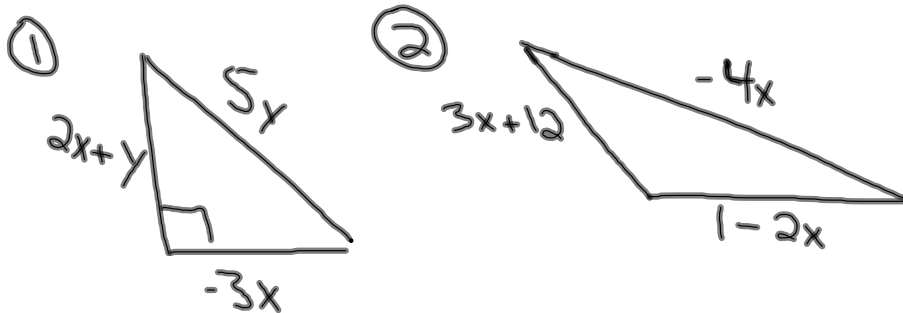


- a) Write the perimeter of each figure as a simplified expression.
 b) Evaluate the perimeter when $x = -2$ and $y = 10$



In each table, one representation of a range of numbers is given. Use this information to fill in the rest of the table.

	①	②	③	④
INEQUALITY			$3 \leq x < 11$	
GRAPH				
INTERVAL NOTATION	$[-3, \infty)$			$(-\infty, -17)$

Write a rule in the form of $y = mx + b$ to represent each table of values.

①

x	0	1	2	3
y	-3	1	5	9

②

x	0	1	2	3
y	101	91	81	71

③

x	0	1	2	3	5	7	x
y	-4	3	10	17	?	?	y = ?

Solve each equation or inequality.

① $-4(2x+5) = 2(-x-9) - 4x$

② $-(13+6x) \leq 23$

③ $|6x-3| = 24$

④ $7x+5 > -3(x-25)$

Solve each equation for y.

⑤ $6x-3y = 15$

⑥ $2x-4y = -36$

While on vacation your family decided to rent a car. The car costs \$75. In addition to this, the company will charge \$0.50 for every mile driven.

a) How much will it cost to drive 50 miles? 100 miles?

b) Make a table of values to show the cost after 0, 50, 100, & 150 miles are driven.

c) Write an EQUATION to represent the relationship between the number of miles driven (m) and the total cost (C) of the rental.

d) If your family received a bill for \$225, how many miles did you drive on your vacation?